



### **The Kayla II. Aging in Place Certified Green Home!**

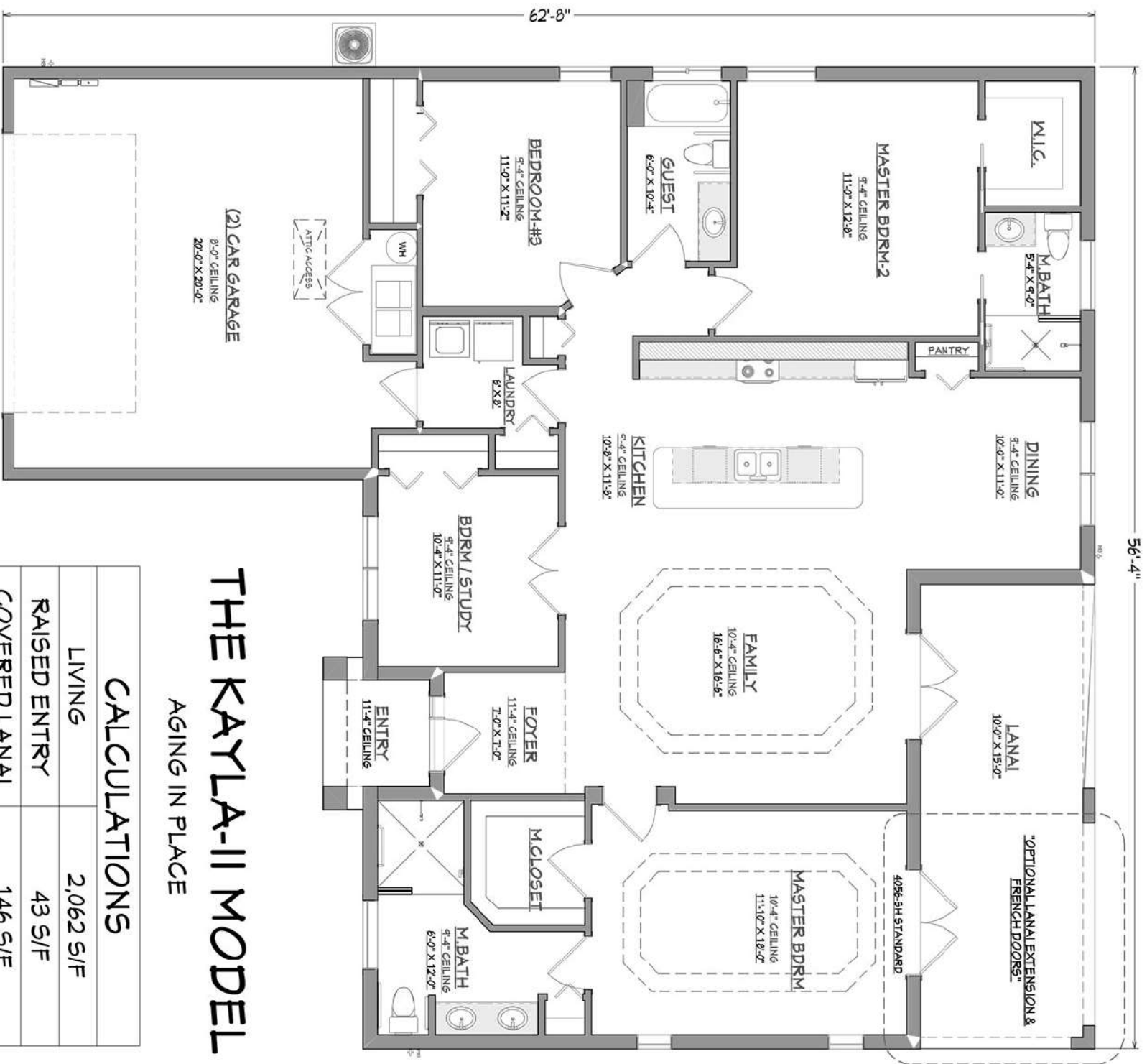
Bed/ Bath/ Garage  
4/ 3/ 2

Living sf  
2,062

Total sf  
2,753

#### **Your major benefits of building this Certified Green home:**

- Highly energy efficient EPA Certified Energy Star homes, FPL Build Smart. Save tens of thousands of dollars for the life of the home. Substantially lower insurance premiums.
- Healthy indoor environment. Free up to 99% of allergen, bacteria, mold, and viruses. EPA Indoor airPLUS certified.
- This house provides the opportunity for our customers to spend their later years in their own home.
- Stay Safe. This home you can build with super insulated, steel reinforced, solid poured concrete ICF walls. Hurricane, tornado impact resistant up to 200 MPH, fire retardant up to 4 hours, sound suppressant.
- Luxury living at an affordable price! Exclusive design and luxury interior features included in our standard specifications.
- This home is built with sustainable construction technologies, that will keep your home competitive in the future housing market with newly built homes. Buying this Certified Green home, you are making the best investment for your family. Homes of the future at today's pricing!



# **THE KAYLA-II MODEL** **AGING IN PLACE**

CALCULATIONS	
LIVING	2,062 S/F
RAISED ENTRY	43 S/F
COVERED LANAI	146 S/F
(2) CAR GARAGE	502 S/F
TOTAL	2,753 S/F